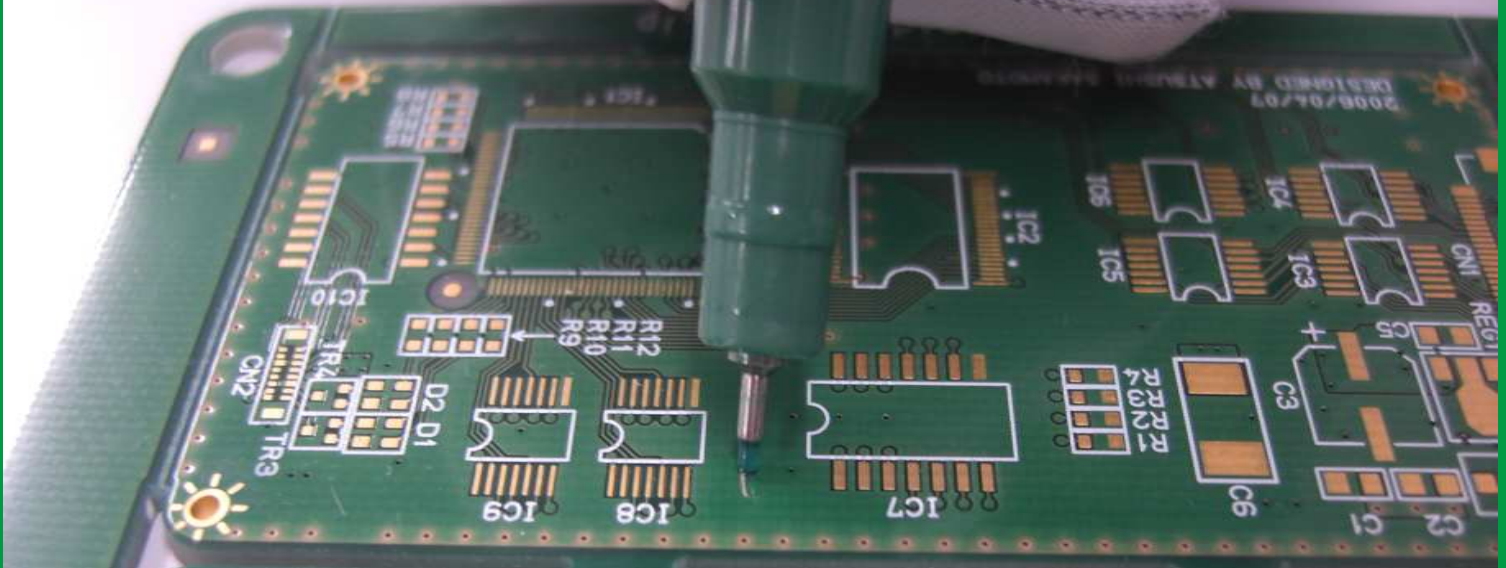




SKETT-PEN

Makes your repair quick, precise and skillful.



SKETT-PEN is innovative tool specialized for repairing solder mask defect of P.W.B.

By adding some reducer, solder mask ink which is be used in your factory can be filled in and used.

*Some types of ink are not be used for SKETT-PEN. We recommend UV curing type solder mask ink for use.

-Features-

Easy to carry and handle it, so that anyone can do repair work anywhere, anytime.

It reduces unevenness of repair result.

Two type of pen point, thinner and thicker, are replaceable.

Stirring ball inside the pen helps ink to get constant viscosity anytime.

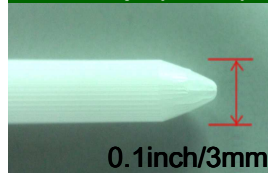
Once the pen is filled, it usually can be used for about 1-2 months.

*It's changed by frequency of usage and type of ink.

Image of repair work



Pen tip (thick)

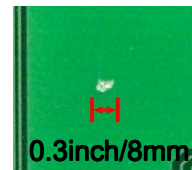


Pen tip (thin)

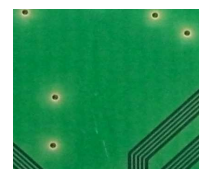
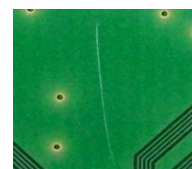


Image of repaired defect

Before



After



Preparing and how to use SKETT-PEN



Open lid. Rotate it in clockwise rotation.

Take inside plug and stirring ball out. (Be careful not to lose)

Keep the pen as this picture and go on next step.



Take some ink and reducer into paint saucers.

Pull portion size of ink and reducer according to diluted amount.

Fill ink into pen. And then, fill reducer **with using other syringe.**



Put back stirring ball, inside plug and lid, then close cap.

Shake pen to stir ink inside.

Push pen point on paper to soak ink in pen tip. (Pumping)
It's ready to start repair failure.

Max capacity: 3.0ml to 0.4ml±0.5ml. 3.0ml of ink and reducer is adequate dosage.

Distributed by

Manufactured by
Shirai Shirai Electronics Industrial Co., Ltd.
<http://visper.homepage.jp>

VISPER&NEW BUSINESS CENTER 1/F UNITY BLD, 67-1
Hara-machi, Nishinokyo, Nakagyo-ku, Kyoto 604-8431 Japan
TEL: (81)75-803-1747 FAX: (81)75-801-0801