

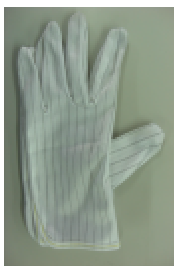


SKETT-PEN User manual

1. Preparing

Preparing items.

- | | |
|--|-----------------------------|
| -Main unit of SKETT-PEN (Pen is shipped with its pen point inserted) | |
| -1 set of Glove | -2 piece of syringe |
| -2 piece of Paint saucer | -Pen point (Small or thick) |



or



2. Open up

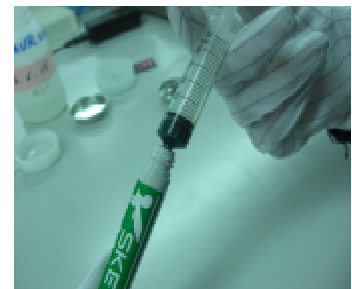
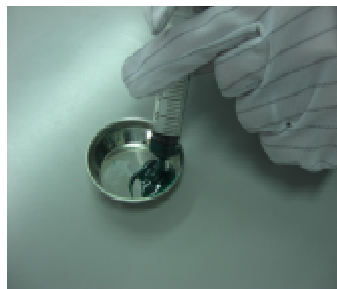


Open lid. Rotate it in clockwise rotation.

Take inside plug and stirring ball out. (Be careful not to lose)

Keep the pen as this and go on next step.

3. Preparing of ink



Take some ink and reducer into paint saucers.

Max capacity:

3.0ml to 4.0ml ± 0.3ml to 0.5ml

->See FAQ.

Pull portion size of ink and reducer from paint saucer according to diluted amount.

Fill ink to pen. And then, fill reducer **with using other syringe.**



Continue to back page

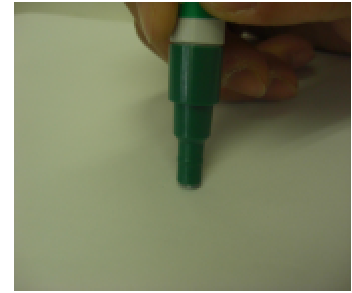
4. Pumping to soak ink in pen point



Put back stirring ball, inside plug and lid, then close cap.

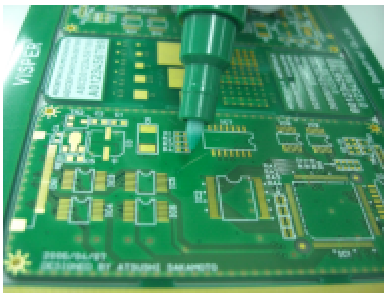


Shake the pen to stir ink inside.



Push pen point on paper to soak ink in pen point. (Pumping)

5 . Coat ink on failure, cure the ink with UV curing system.



NO IMAGE

Apply ink on failure. It makes better to use different pen point for the size of failure.

Cure the PWB with UV curing system, etc.

FAQ

Q. Ink gets stuffed up and can't coat failure.

A. Shake pen to stir ink inside, then coat failure smoothly. Also soak ink to pen point by pumping it.

Q. Coating isn't cured after paint solder mask.

A. Curing may not work properly it depends on curing system. Shirai Electronics turns over curing system, please inquire about it.

Q. What is maximum capacity of ink?

A. Max is 3.0ml to 4.0ml ± 0.3ml to 0.5ml. Normally fill ink about 3.0ml with ink and reducer.

Shirai Shirai Electronics Industrial Co.,Ltd.
<http://visper.homepage.jp>

Shirai Electronics Industrial Co., Ltd.
1/F UNITY BLD, 67-1 Hara-machi, Nishinokyo, Nakagyo-ku,
Kyoto 604-8431 Japan
TEL (81) 75-803-1747 FAX (81) 75-801-0801

→For more detail, contact distributor or send inquiry to info-visper@shiraidenshi.co.jp